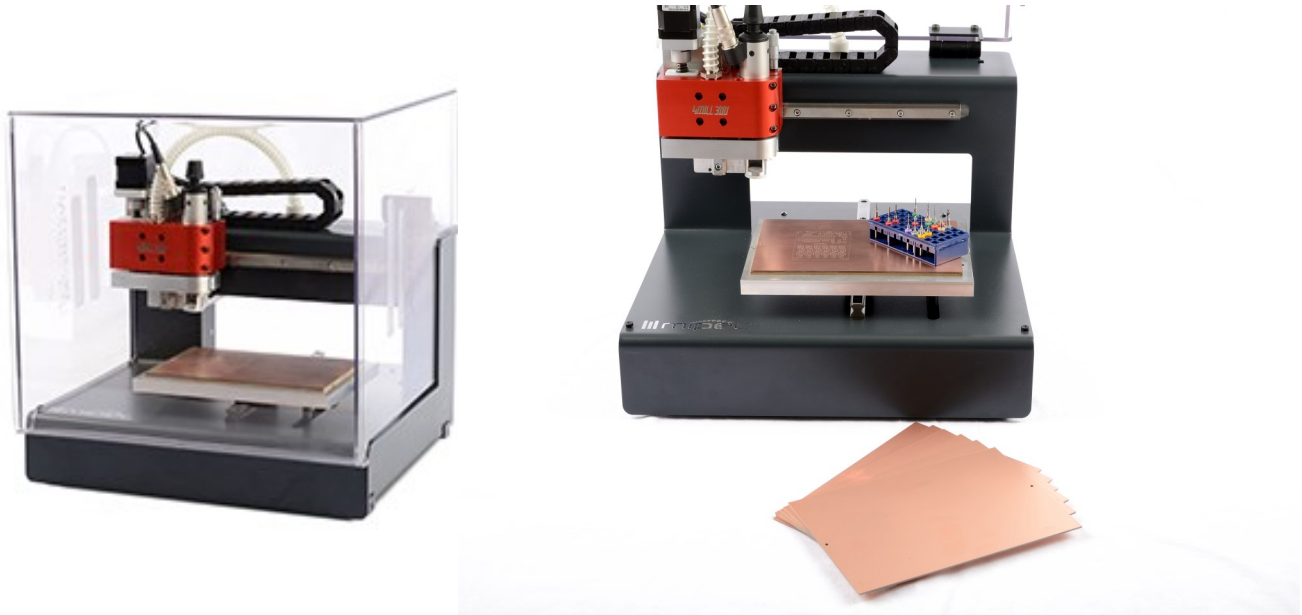


MIPEC 4MILL300

PCB and RF Antenna Design with Manual Tool Change



Mipec is trademark of P2J Technology, from Czech Republic. P2J Technology is specialized in developing and manufacturing of precise milling and drilling equipment that meets highest of customer's demands.

MIPEC can handle standard Single side and Double sided PCB designs, SMD, RF and various other applications.

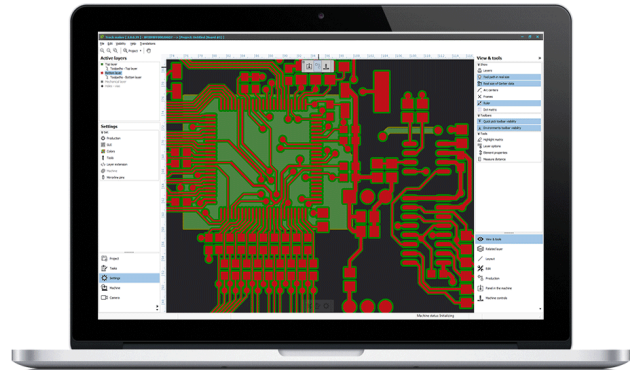
Mipec machines are made in Czech republic using only top quality components made in Germany and Czech republic, manufactured under very strict quality rules. This ensures the top quality and reliability of the end product.

With a MIPEC PCB prototyping solutions, you can produce PCBs in your own lab – fast, environmentally friendly, and with high accuracy. It is no more necessary to wait days or weeks for your boards to be delivered from your external suppliers. With MIPEC prototyping method , you can proceed directly from the design phase to the implementation and testing of your design in the shortest possible period. If any design error is discovered, a new PCB can be produced almost immediately and you can run your tests again.

TrackMaker: TrackMaker is an integrated insulation and machine-control package dedicated for PCB milling. TrackMaker is running on Windows™ operating system.

DATA IMPORT: Various import formats: Gerber D & X, Excellon, ODB++, DXF, Sieb & Meyer, HPGL and more..

Board editing and adding of shapes, draw your own geometries and tool-paths.



4MILL300 Machine is delivered together with full license of TrackMaker software and powerful set of tools consisting of:

TOOL SET: Universal cutter for 0.2 - 0.5mm paths 10pcs, Contour router 1mm 2pcs Contour router 2mm 2pcs End mill 1mm 2pcs End mill 2mm 2pcs Drill 0.6mm 5pcs Drill 0.7mm 5pcs Drill 0.8mm 5pcs Drill 0.9mm 5pcs Drill 1mm 5pcs Drill 1.3mm 2pcs Drill 1.5mm 2pcs Drill 2mm 1pcs Drill 3mm 2pcs.

CONSUMABLES FOR PCB MILLING: Copper plates FR4, format A5, 2 sided 10pcs Copper plates FR4, format A5, 1 sided 10pcs Drill underlay material, format A5 10pcs Cleaning pads 10pcs Sticky tape 1pcs.

Technical specifications

Manufacturer:	MIPEC
Max. material size:	240 x 180 x 30mm
Milling spindle:	software controlled brushless motor with pneumatic clamp, max. 60000 RPM/100000RPM
Resolution:	1µm
Repeatability:	± 0.005 mm
Tool-changer:	Simple and fast PUSH&TURN manual tool change
Tool-holder:	3.175mm
Milling depth adjustment:	µm precise depth adjustment
Drilling speed:	up to 120 strokes/min
Travel speed X/Y:	40mm/s
X/Y/Z drives:	hybride motors
Machine table:	flat milled aluminium table with central T-slot
Dimensions:	W-420 x D-455 x H-435mm
Power supply:	115/230V, 50-60Hz
Software:	TrackMaker
Dust Extractor	Yes, Eureka Forbes Make